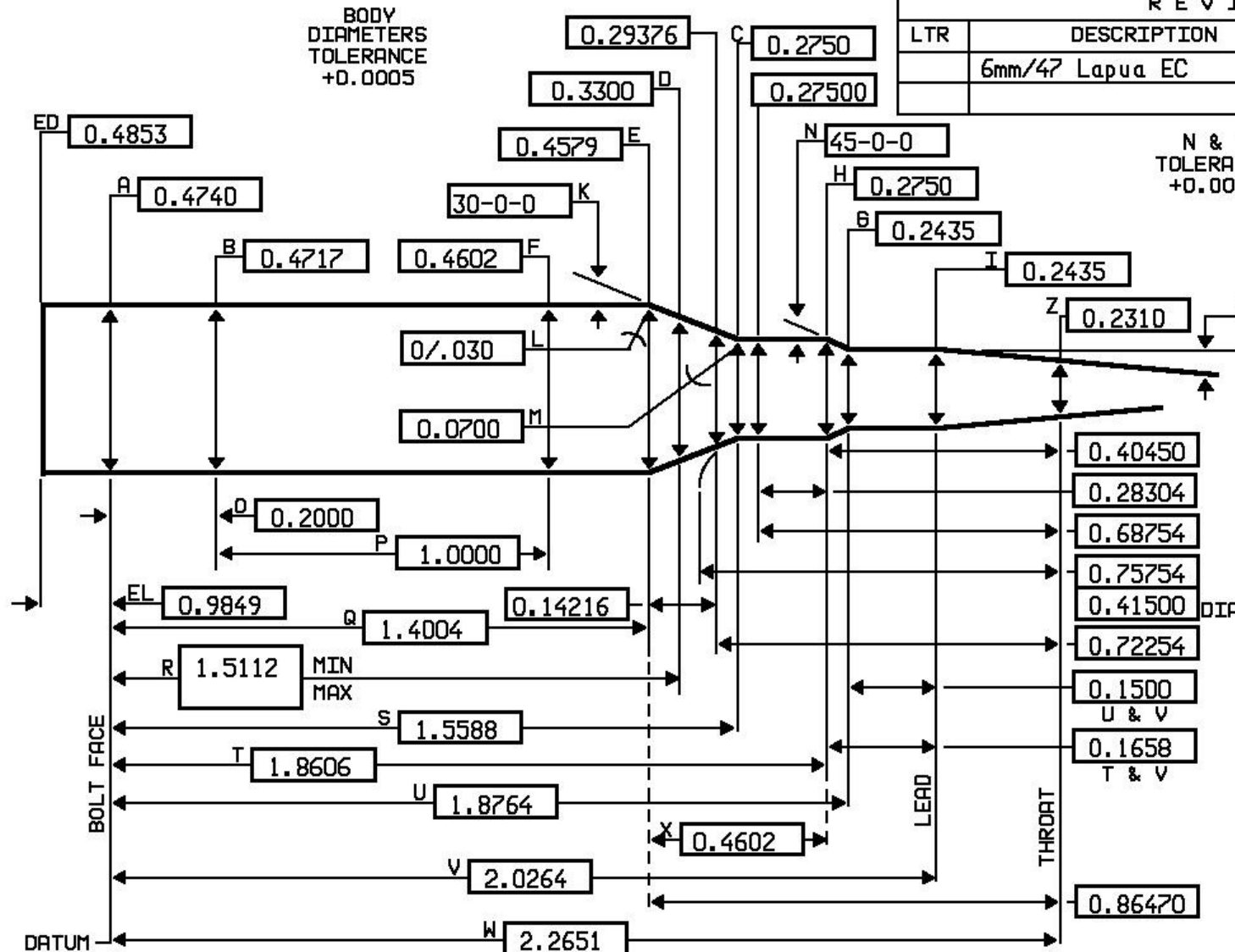


6/47LAP EC

BODY DIAMETERS TOLERANCE +0.0005



REVISIONS			
LTR	DESCRIPTION	DATE	APPROVED
	6mm/47 Lapua EC	01/19/18	CP
		04/03/18	GG

N & T TOLERANCE +0.0005
 ANGLE TOLERANCE ±15 MIN.

SHANK LENGTH	1.7500
PILOT LENGTH	0.0000
OAL BLANK	5.0000
PILOT SIZE	0.2356
CALIBER	6MM
BORE SIZE	0.2360
GROOVE SIZE	0.2430
BASIC BRASS	6.5/47 LAPUA
RESIZE N.D.	0.2630
MARGIN	
TPI 1in 20 INCHES	
BODY TPI	0.11497
NECK TPI	0.00000
THROAT TPI	0.52372

DESIGNER NAME Erik Cortina
 PHONE () _____

LENGTHS TOLERANCE +0.0050

JGS
 COOS BAY, OR USA
 97420

SIZE **A**
 DWN. DATE 04/03/18
 SCALE NONE

RIMLESS OR REBATED RIFLE
 MINIMUM CHAMBER
 PRINT # 6/47LAP EC

COMMENT: Use standard 6.5/47 Lapua headspace gauges.
 Released to the public 04/03/18.